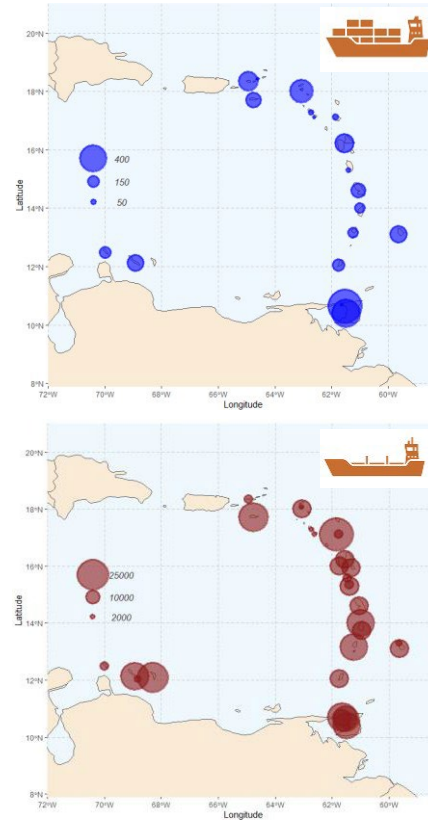
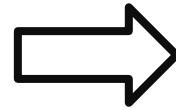
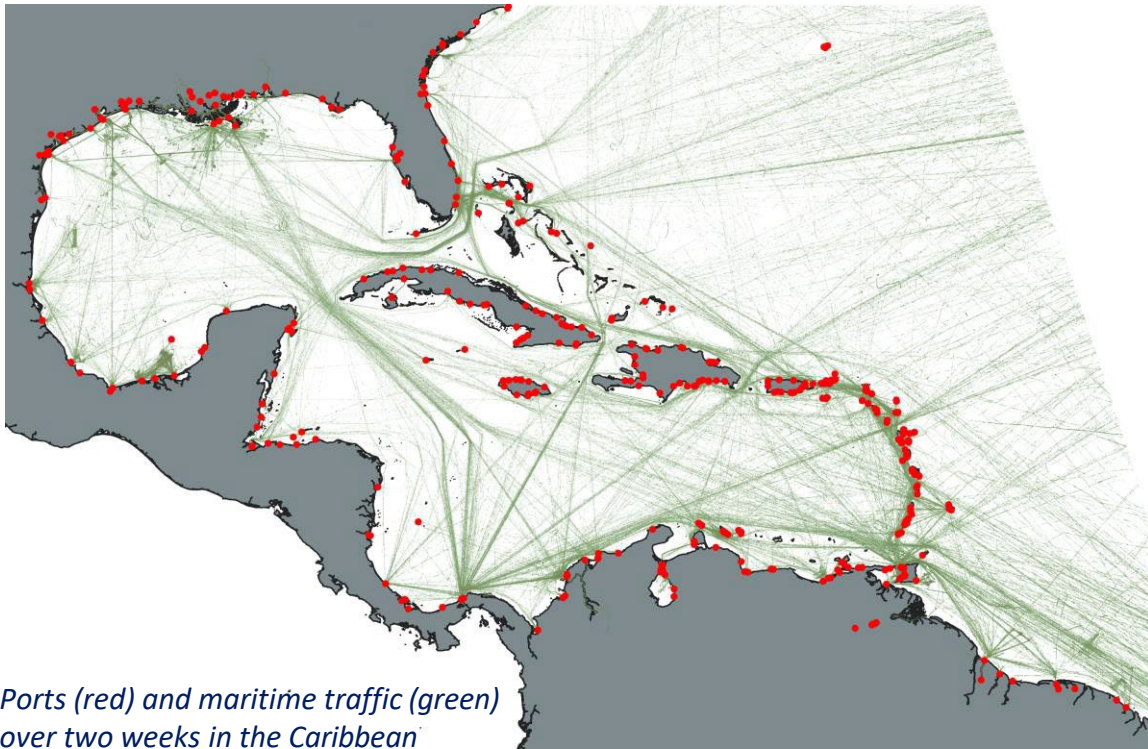
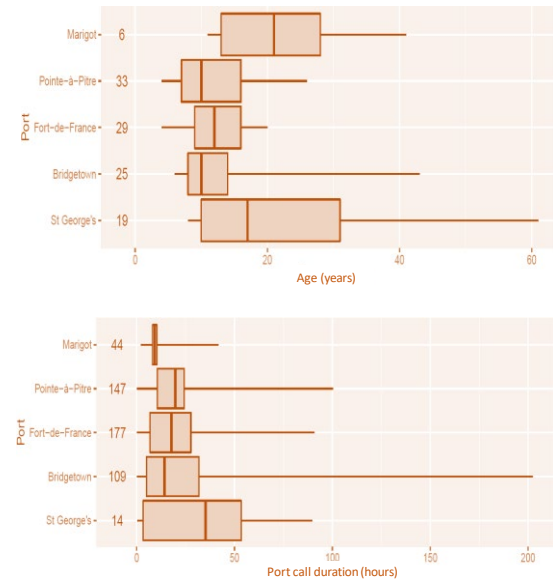


Port Call Extraction and Characterisation from Maritime Navigational Data: An Application to The Lesser Antilles

Clément IPHAR,
Iwan LE BERRE,
Éric FOULQUIER,
Aldo NAPOLI



Number of port calls for container vessels (left) and mean tonnage of bulk vessels (right)



Age of general cargo vessels and port call duration of tanker vessels for 5 ports of the Lesser Antilles

