

# QUALITY ASSESSMENT OF BIG DATA WITH GIS

M. JELLEMA  
- INFOFOLIO

M. DE BAKKER  
- HAS UNIVERSITY  
OF APPLIED SCIENCES

The increase of available data and more users with different needs influence the approach regarding data quality. We propose an integration of the Big Data Quality Assessment Model and GIS functionalities.

## DATA

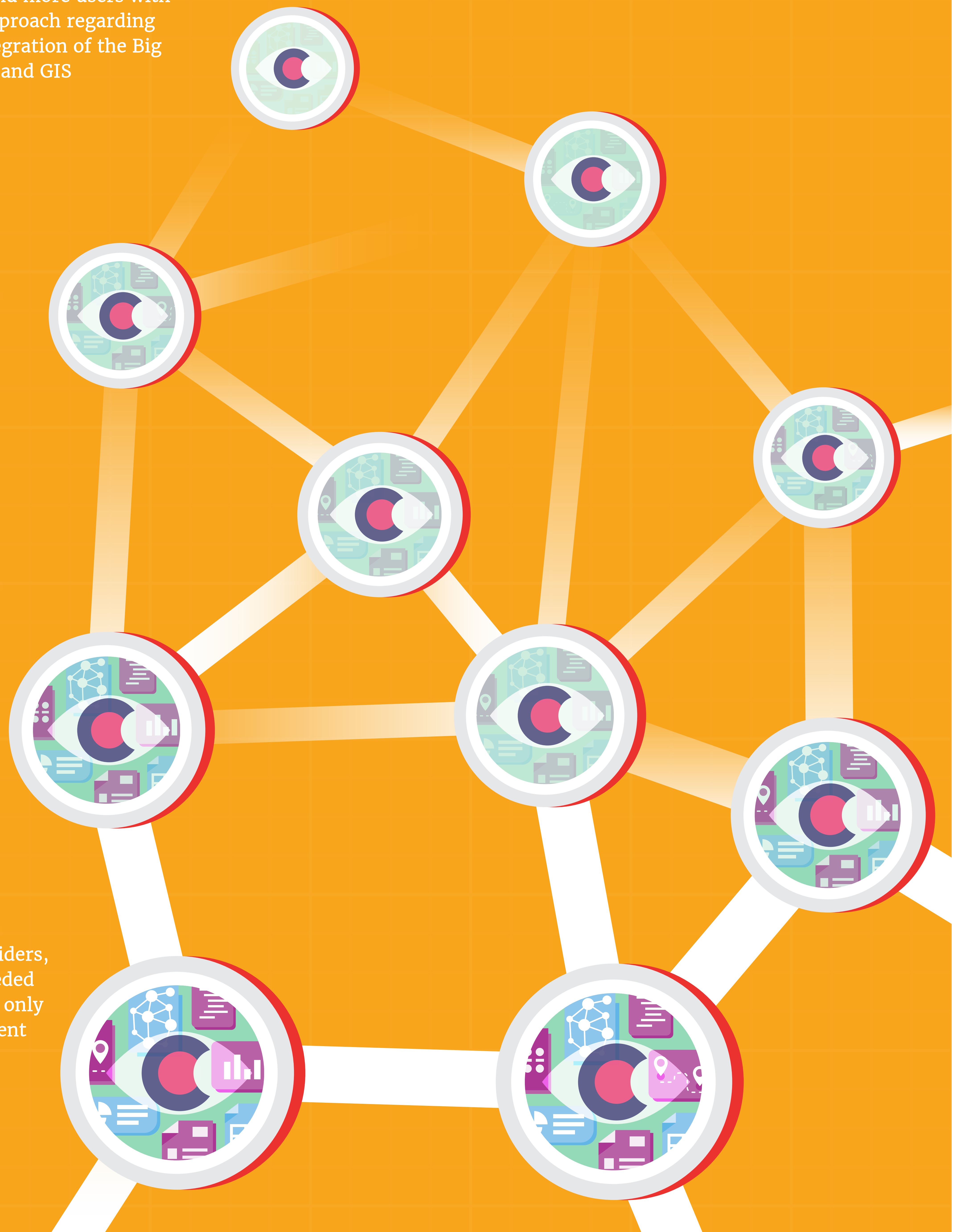
Many eyes of different users on more and more available data.

## QUALITY

Different "fitness for use" depending on usage and links between data-sets. GIS can help.

## ASSESSMENTS

Cooperation between data-providers, data-upgraders and users is needed for reliable assessments. This is only possible if reliable and transparent models are in place.



# ACT NOW!

Cooperate and send your contribution to  
[m.jellema@infofolio.nl](mailto:m.jellema@infofolio.nl) or [m.debakker@has.nl](mailto:m.debakker@has.nl).

AGILE CONFERENCE 2017



CREATED BY:  
Forget  
The Fish