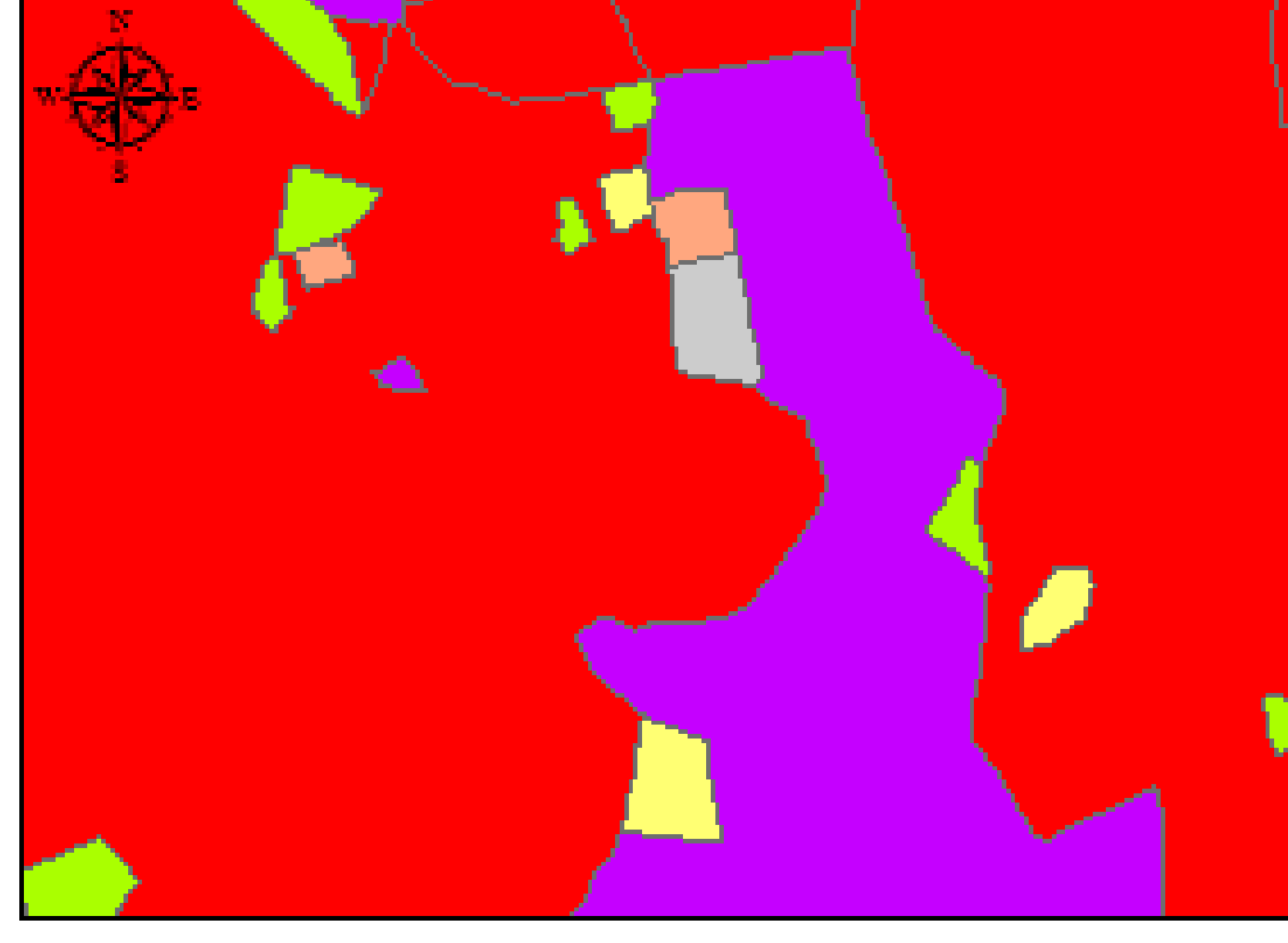


Wasim Shoman* and Hande Demirel
Istanbul Technical University
Maslak
Istanbul, Turkey

Land Use map for part of Istanbul

- Legend**
- Land Use
 - Urban
 - Industrial
 - Roads and car parkings
 - Airports and Marine ports
 - Green Urban
 - Sport leisure
 - Arable Area
 - Construction site
 - Open space

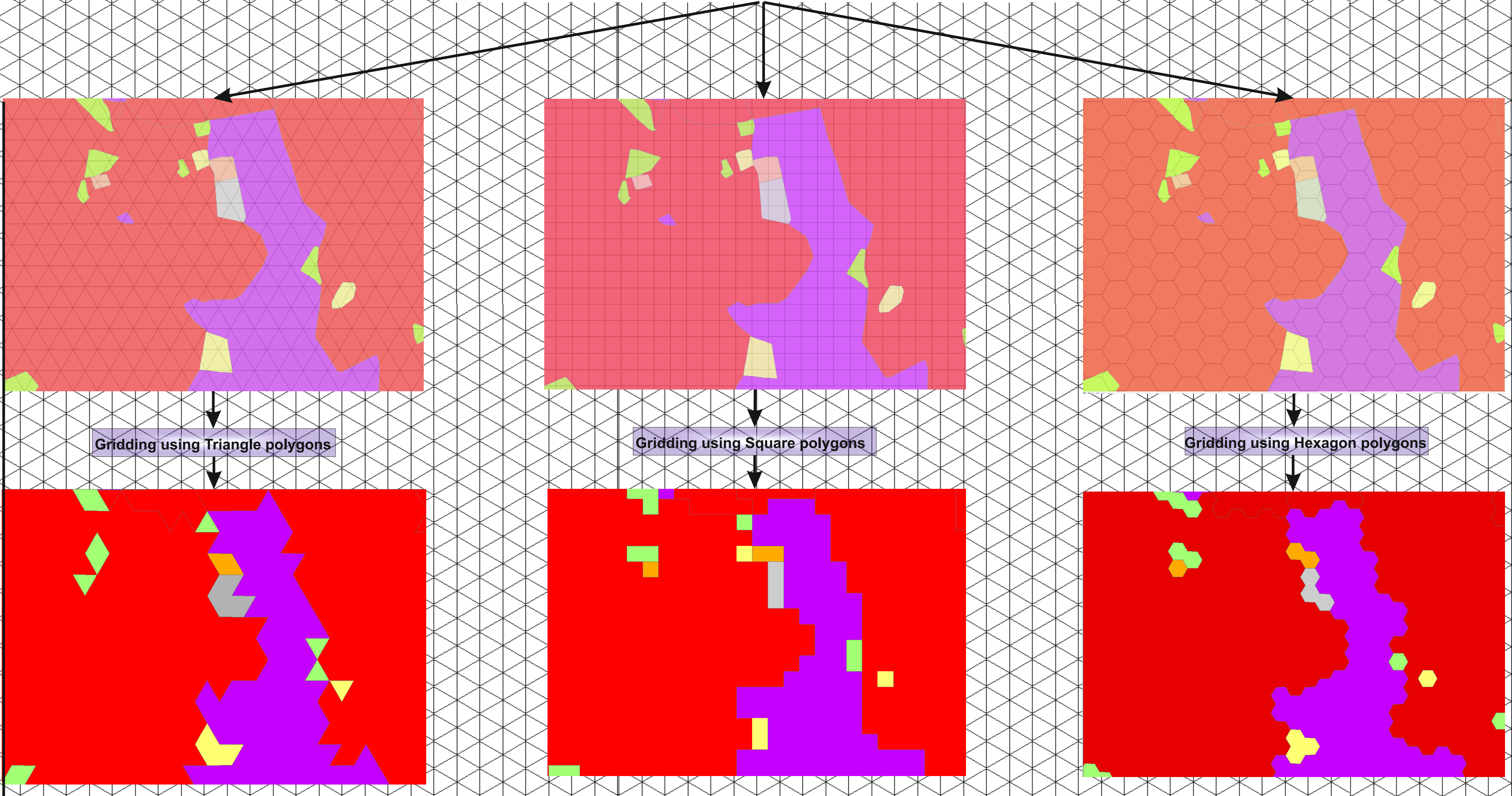


THE PROBLEM

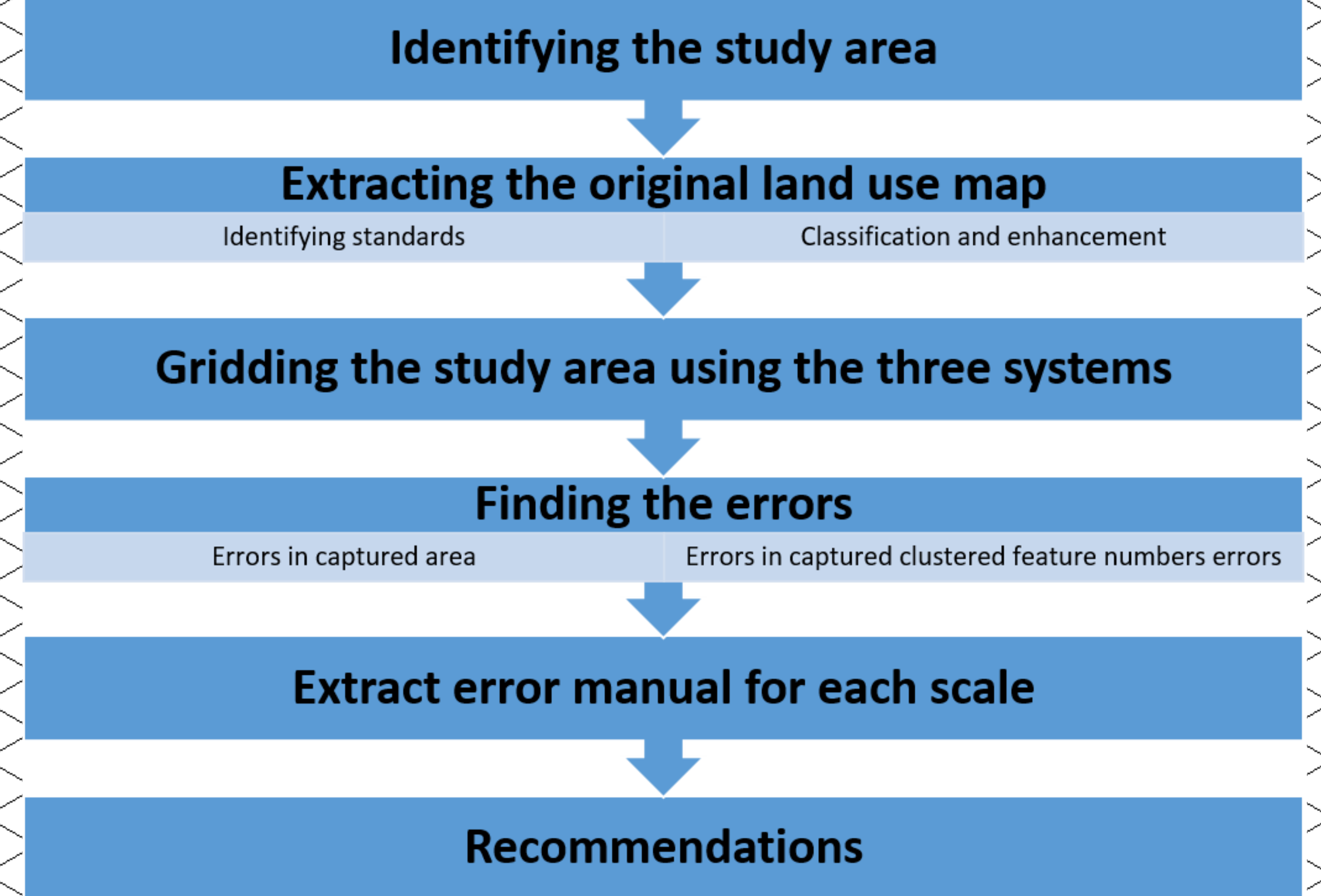
Finding proper gridding system and its resolution that help in accurate representing of original raster land use thematic maps for accessibility analysis

SUGGESTIONS

implementing one of the most used basic regular gridding systems i.e. Triangle, Square and Hexagon



The used methodology



What causses are important for the analysis ?

???

Which provide most accurate results?

???

what are the critiria to define their accuracy ?